



NEARLY
40
yrs
SINCE 1982



CLEANING SOLUTIONS

COMMERCIAL & INDUSTRIAL

DESIGNED AND DEVELOPED FOR
CAR CARE • HOTEL / ACCOMMODATION CENTRE
CATERING • INDUSTRIAL SECTOR

40 YEARS

OF EXPERTISE



**RELIABLE,
POWERFUL,
ECONOMICAL.**

Drainvac offers a wide **range of products** which can be **combined with one another** to offer you a configuration that will answer perfectly to your specific needs.

On the industrial level, **Drainvac is equally specialized to design customized systems** for your business with power that can go up to **30 HP!**



When safety is a top priority, we can help you prevent **fires and explosions in hazardous environments** with specialized systems following NFPA standards.

The following pages will demonstrate different types of suggested installations* for selected sectors.

*The following installations are examples of configurations most commonly used, but may be adapted or improved. For any questions, do not hesitate to contact your authorized Drainvac dealer or your sales representative.





LIANE CHAGNON

Tim Hortons franchise Mont-St-Hilaire

“Drainvac has the perfect solution for wet carpets [...] **It gets rid of the calcium, the snow** [...] It's really something we love.”

“We no longer need to wash the tank, wash the mop, then rinse all of it.”



ÉRIC DUMOUCHEL

President of Baril Ford

“No more equipment on wheels hitting doors or side panels”

“We have separated the motor from the employees [...] **It's quieter, people can talk to each other.**”

“We've been with Drainvac since **2007**, so there's a **trusting relationship that was established.**”



SAM DOUM

President of Autodoum

“Drainvac's hose reel is very practical. Mounted onto the wall or ceiling, **it keeps the floor clear**”

“The savings are huge especially when it comes to replacement parts. It's really **a reliable system.**”

“We used to have two types of equipment; one for the dust and another for the wet carpets. **With Drainvac's system, we can do both!**”

FORMER METHOD



Bulky, noisy, emits **bad odours**, can leave **marks and scratches**.



Risk of **damaging your surroundings**.



A hassle to carry and can **cause back pain**.



A disposable dust bag, a filter or cartridges must be changed regularly. In addition, it must be emptied manually and produces **lots of dust**.



The other possibility consists of commercial vacuums which are normally **huge** and require **an outdoor installation**.



Vacuums only **dry substances**.

DRAINVAC'S METHOD



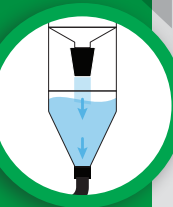
Silent, no odors nor marks and scratches.



Safe for the surroundings.



Nothing to carry.



Automatically empties itself and does not carry any dust bags, nor filters or cartridges. A huge time and money saver!



Compact design.



Vacuums both liquids and solids.



CAR CARE

P8-9 1 USER CONFIGURATION
MODERATE USAGE - MANUAL DISCHARGE

P10-11 1 USER CONFIGURATION
MODERATE USAGE - AUTOMATIC DISCHARGE

P12-13 1 USER CONFIGURATION
FREQUENT USAGE

P14-15 1 TO 2 USER CONFIGURATION

P16-17 SELF-SERVICE CONFIGURATION

CONFIGURATION:
1 USER

MODERATE USAGE
MANUAL DISCHARGE

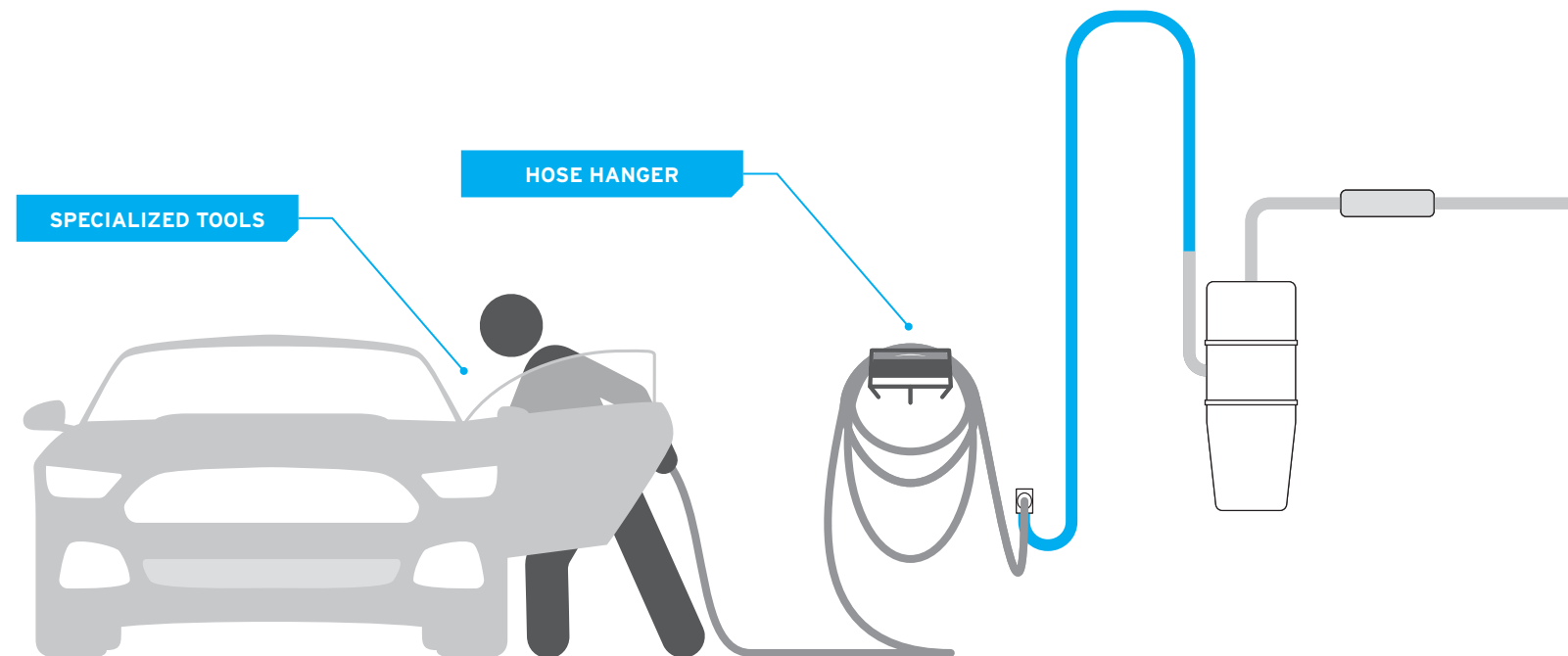


RECOMMENDED UNIT

CYCLONIK

- Cyclonic vacuum.
- Constant suction, unlike other systems which carry dust bags.
- Vacuums solids and liquids.

Legend: ■ Dry-Liquid Line



DETAILING

Cyclonik System

CYCOMDV : 181 H₂O | 122 CFM

CYCOMDF : 4191 mmH₂O | 198 m³/h

Basic installation designed for **1 user at a time only**. Unlike other systems that require a dust bag, the Cyclonik **does not lose any suction power**. Perfect for small businesses.

CONFIGURATION:
1 USER

MODERATE USAGE
AUTOMATIC DISCHARGE

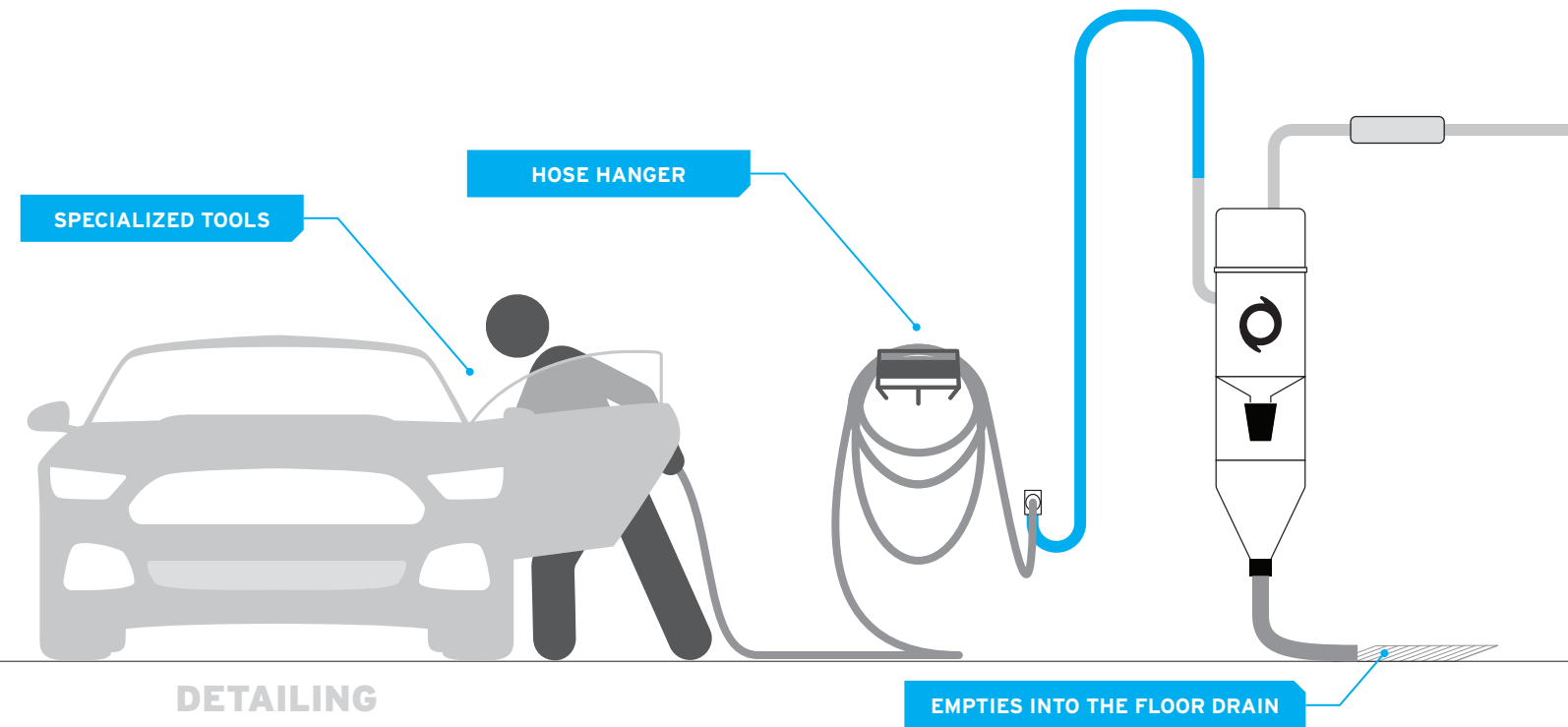


RECOMMENDED UNIT

AUTOMATIK

- 2 in 1 system: vacuums both dry and liquid substances.
- No post-cleaning required: no filter or bag.
- Automatically discharges into the floor drain.
- Ideal for shampooing.
- Easy maintenance through the porthole.
- Collect accidentally vacuumed objects thanks to the decanter.

Legend: ■ Dry-Liquid Line



DETAILING

Automatik System

MASCOMDV : 160 H₂O | 111 CFM

MASCOMDF : 4191 mmH₂O | 198 m³/h

Basic installation designed for **1 user at a time**. Vacuums **both dry and liquid substances**. Perfect for small businesses.

CONFIGURATION:
1 USER

FREQUENT USAGE



RECOMMENDED UNIT

AUTOMATIK

- 2 in 1 system: vacuums both dry and liquid substances.
- No post-cleaning required: no filter or bag.
- Drains automatically into sanitary piping or can be redirected towards a floor drain.
- Ideal for shampooing.
- Easy maintenance through the porthole.
- Collect accidentally vacuumed objects thanks to the decanter.

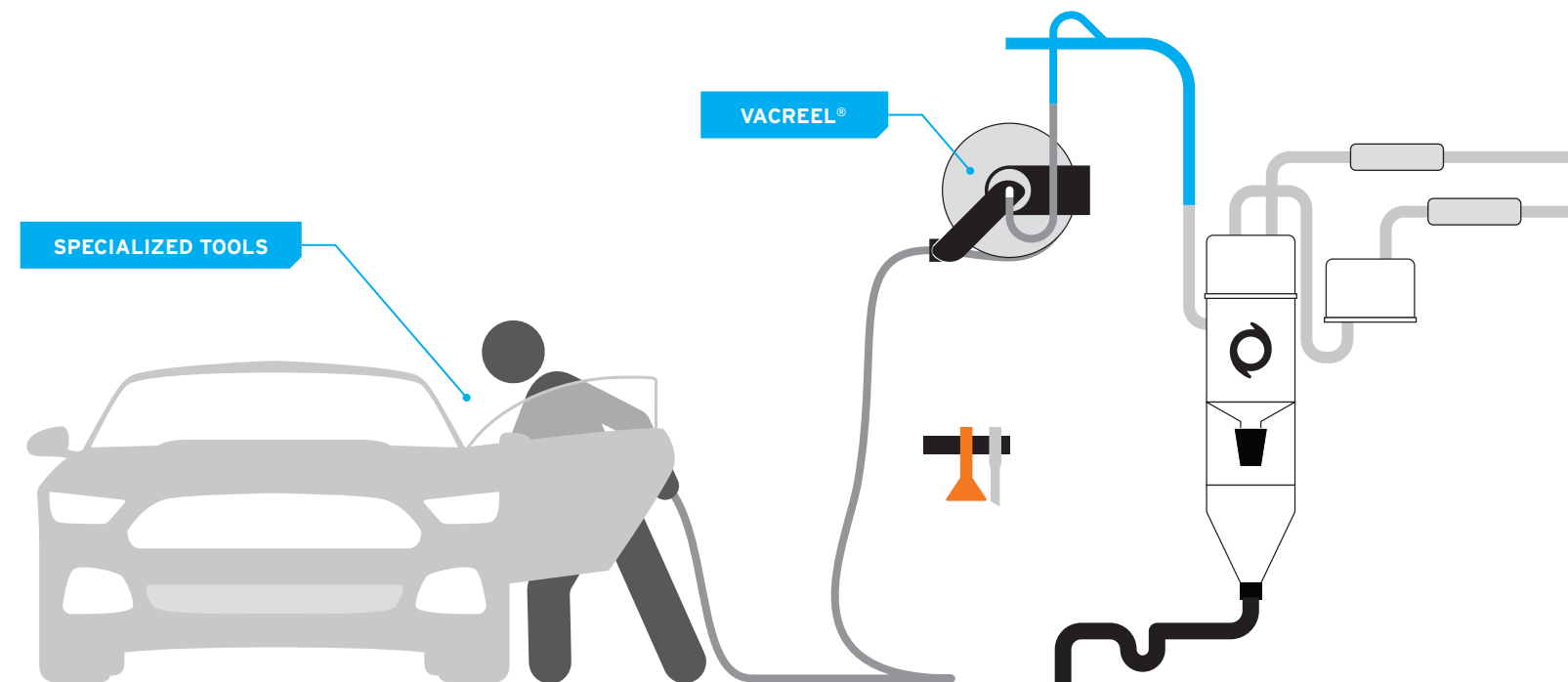


COMPLEMENTARY ACCESSORIES

VACREEL®

- Retractable hose.
- Safe work environment.
- Hose available in 1.25" (32mm) or 1.5" (38mm).
- Tools with wall support included.

Legend: ■ Dry-Liquid Line



DETAILING

Automatik System with VacReel®

MASCOM27 + BOOSTER27 :
181 H₂O | 224 CFM

MASCOMDF + BOOSTER05 :
4191 mmH₂O | 396 m³/h

Used by **1 user at a time**, the Automatik vacuums both **dry and liquid substances**. The VacReel® allows you to work efficiently and safely.

CONFIGURATION: 1 TO 2 USERS



RECOMMENDED UNIT

AUTOMATIK SEPARATOR

- 2 in 1 system: vacuums both dry and liquid substances.
- No post-cleaning required: no filter or bag.
- Drains automatically into sanitary piping or can be redirected towards a floor drain.
- Ideal for shampooing.
- Easy maintenance through the porthole.
- Collect accidentally vacuumed objects thanks to the decanter.

11.5 HP MOTOR

- Regen-type motor.
- Designed to run for several consecutive hours.
- Stainless steel housing.



COMPLEMENTARY ACCESSORIES

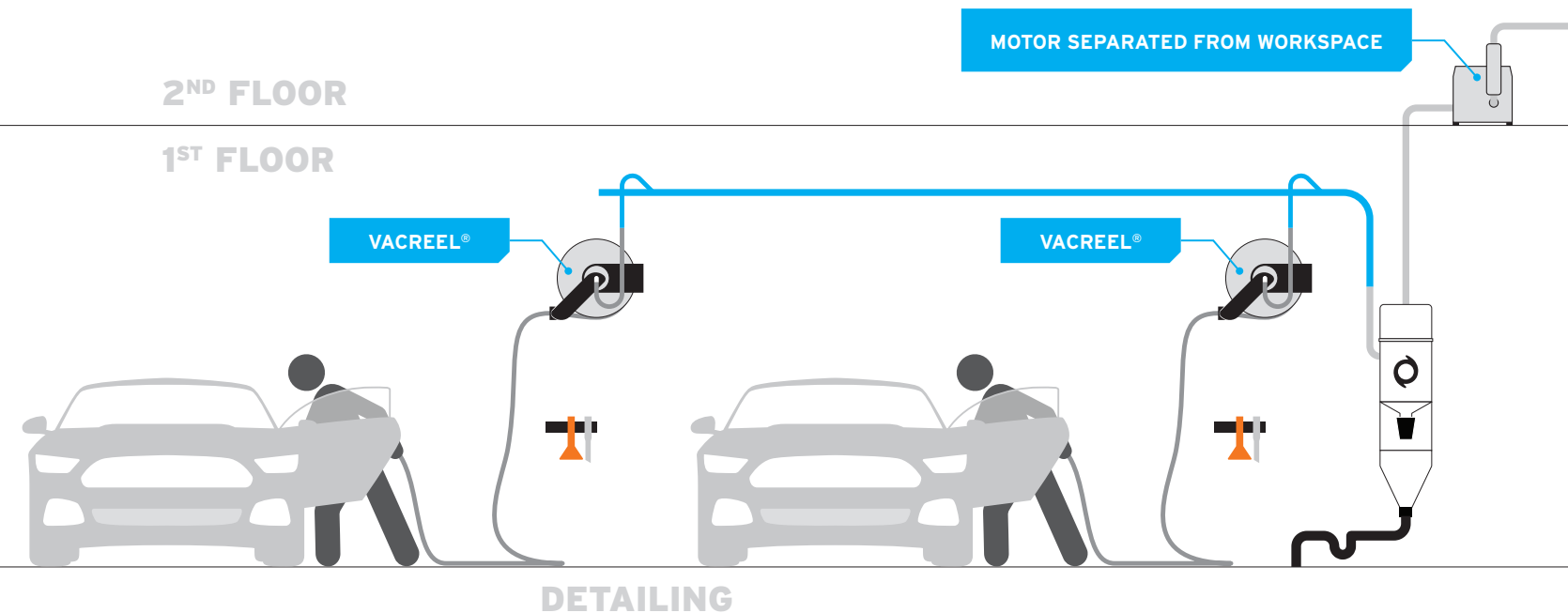
VACREEL®

- Retractable hose.
- Safe work environment.
- Hose available in 1.25" (32mm) or 1.5" (38mm).
- Tools with wall support included.

Legend: ■ Dry-Liquid Line

2ND FLOOR

1ST FLOOR



**Automatik Separator
with VacReel®**

REGEN Motor
365 CFM (620 m³/h), 141 H₂O (-350 mbar)

Powered by an external motor, the Automatik Separator can serve up to 2 users at a time and can handle both **dry and liquid substances**.

CONFIGURATION: SELF-SERVICE



RECOMMENDED UNIT

INDUSTRIAL AUTOMATIK

- Custom-made.
- Designed to operate for several consecutive hours.
- Compact design compared to our competitors.
- No cartridge or filter to maintain.
- No post-cleaning required.
- Drains automatically into sanitary piping or can be redirected towards a floor drain.
- Easy access to the tank through the porthole.
- Automated cleaning cycle.
- Piping available in two sizes: 3" (76mm) or 4" (102mm).
- Easy maintenance through the porthole.
- Collect accidentally vacuumed objects thanks to the decanter.

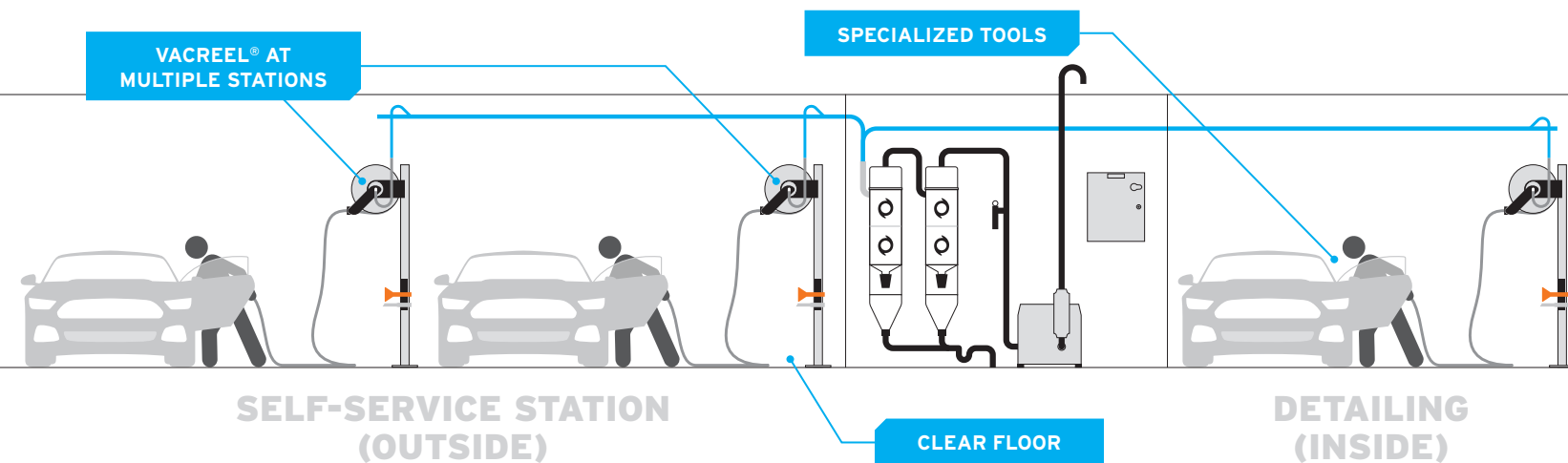
COMPLEMENTARY ACCESSORIES

VACREEL®

- Retractable hose.
- Safe work environment.
- Hose available in 1.25" (32mm) or 1.5" (38mm).
- Tools with wall support included.



Legend: ■ Dry-Liquid Line



Custom-made **Industrial Automatik** with **VacReel®**

REGEN Motor
17 HP (12.6 kW) to 30 HP (21.3 kW)

Exterior installation for self-service. In this case, **every cleaning station is equipped with a VacReel®**. If your business offers a detailing service, **a cleaning station can be added.** **Everything is connected to the same vacuum system.**



CATERING

P20-21 CONFIGURATION FOR SMALL SURFACES

P22-23 CONFIGURATION FOR LARGE SURFACES

CONFIGURATION: SMALL SURFACES

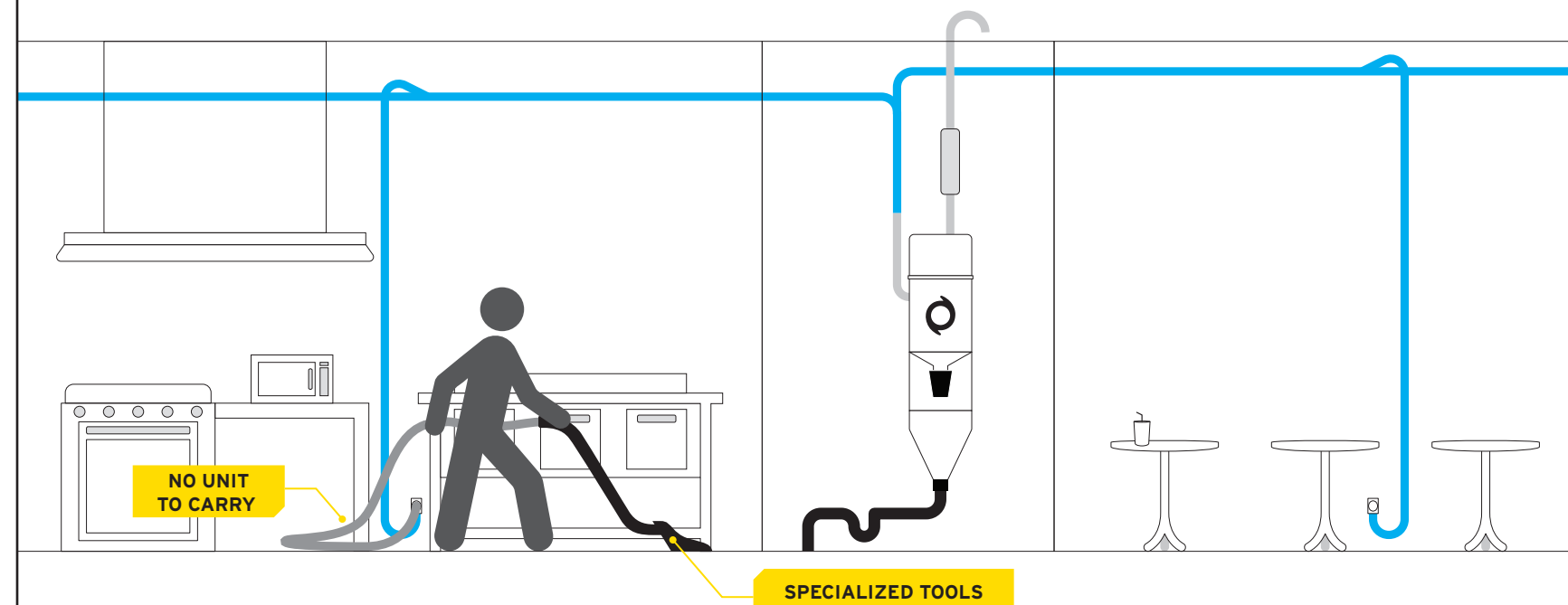


RECOMMENDED UNIT

AUTOMATIK

- 2 in 1 system: vacuums both dry and liquid substances.
- No post-cleaning required: no filter or bag.
- Drains automatically into sanitary piping or can be redirected towards a floor drain.
- Easy maintenance through the porthole.
- Collect accidentally vacuumed objects thanks to the decanter.

Legend: ■ Dry-Liquid Line



Automatik System

MASCOMDV : 160 H₂O | 111 CFM

MASCOMDF : 4191 mmH₂O | 198 m³/h

Only one system is necessary to clean the entire kitchen and dining area. **Specially designed accessories for the kitchen** are offered to reach **difficult areas and arduous tasks**.

CONFIGURATION: LARGE SURFACE



RECOMMENDED UNIT

AUTOMATIK

- 2 in 1 system: vacuums both dry and liquid substances.
- No post-cleaning required: no filter or bag.
- Drains automatically into sanitary piping or can be redirected towards a floor drain.
- Ideal for shampooing.
- Easy maintenance through the porthole.
- Collect accidentally vacuumed objects thanks to the decanter.

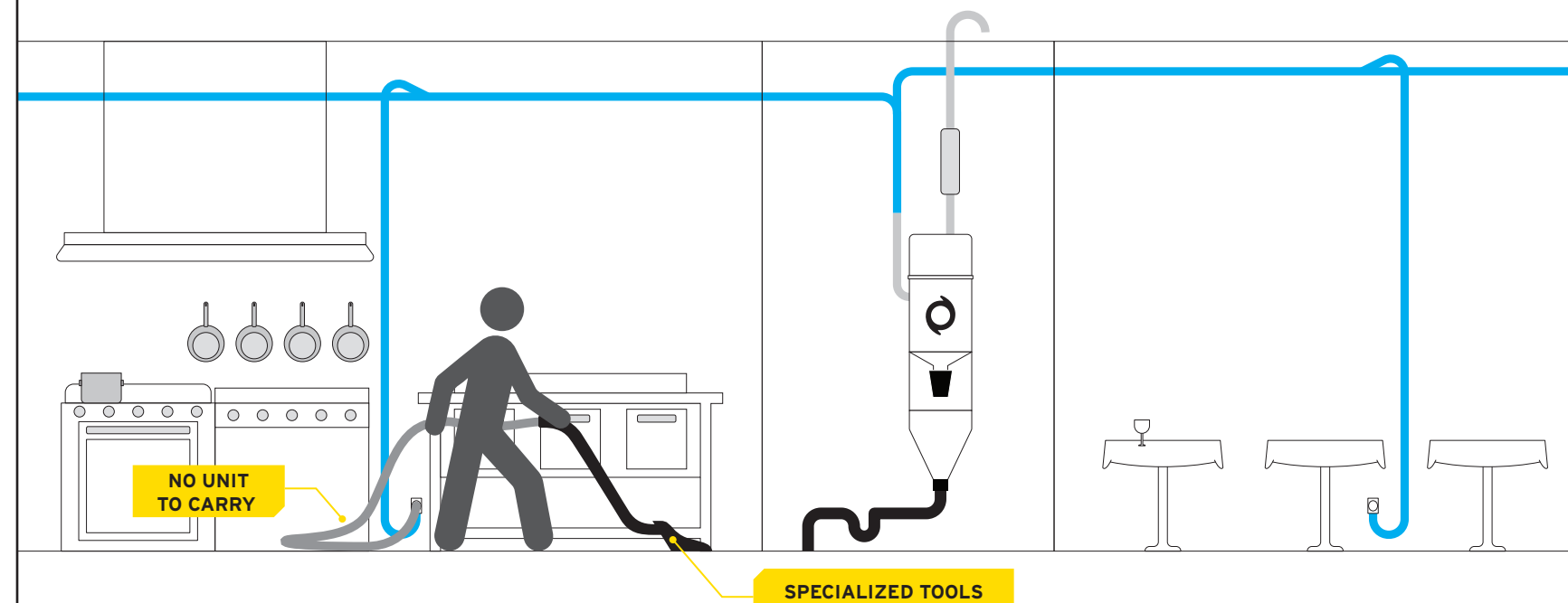


COMPLEMENTARY ACCESSORIES

BOOSTER HEAD

- Boosts your system's power.
- Installed in series for more suction.
- Installed in parallel for more airflow.

Legend: ■ Dry-Liquid Line



Automatik System

MASCOM27 : 181 H₂O | 122 CFM

MASCOMDF : 4191 mmH₂O | 198 m³/h

Only one system is necessary to maintain the whole restaurant. **Specially designed tools for the kitchen** are offered to **reach hard places and for the tough clean-ups**.



HOTEL & ACCOMMODATION CENTER

P26-27 4 FLOORS OR LESS CONFIGURATION

P28-29 5 FLOORS OR MORE CONFIGURATION

**CONFIGURATION:
4 FLOORS OR LESS**



RECOMMENDED UNIT

CYCLONIK

- Cyclonic vacuum.
- Constant suction, unlike other systems which carry dust bags.
- Vacuums solids and liquids.

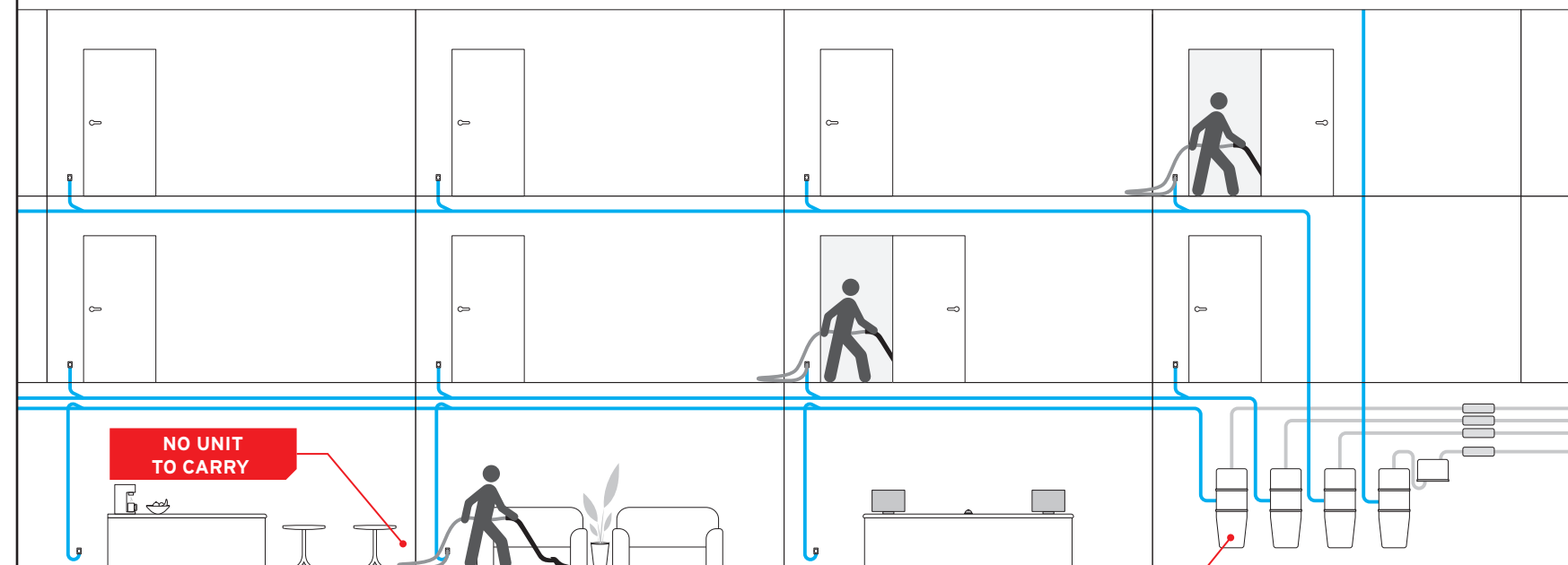


**COMPLEMENTARY
ACCESSORIES**

BOOSTER HEAD

- Boosts your system's power.
- Installed in series for more suction.
- Installed in parallel for more airflow.

Legend: ■ Dry Line



Cyclonik System

CYCOMDV : 181 H₂O | 122 CFM

CYCOMDF : 4191 mmH₂O | 198 m³/h

Whether installed in a mechanical room or in a basement, **each unit is dedicated to a floor. A booster head may be required** for the last floor in order to supply sufficient power.

CONFIGURATION: 5 FLOORS OR MORE



RECOMMENDED UNIT

INDUSTRIAL AUTOMATIK

- Custom-made.
- Designed to operate for several consecutive hours.
- Compact design compared to our competitors.
- No cartridge or filter to maintain.
- No post-cleaning required.
- Drains automatically into sanitary piping or can be redirected towards a floor drain.
- Easy access to the tank through the porthole.
- Automated cleaning cycle.
- Piping available in two sizes: 3" (76mm) or 4" (102mm).
- Easy maintenance through the porthole.
- Collect accidentally vacuumed objects thanks to the decanter.

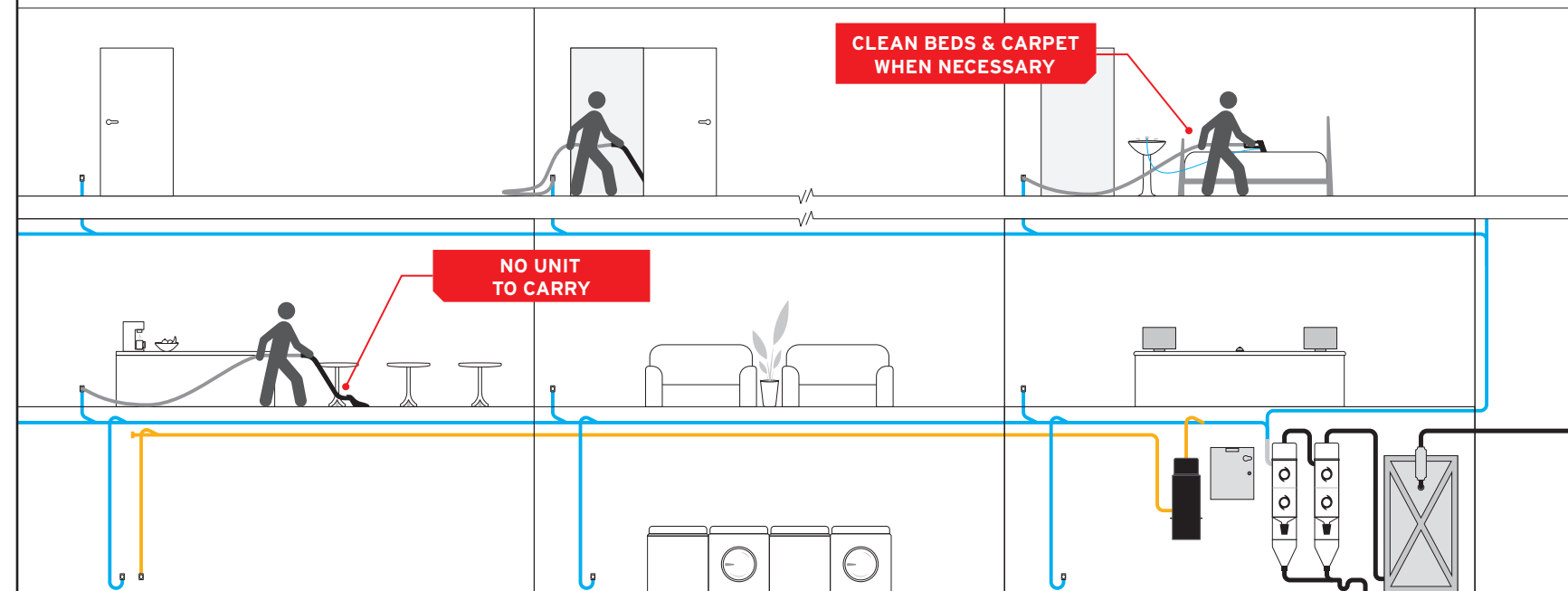


COMPLEMENTARY ACCESSORIES

METAL SEPARATOR

- Intercepts the waste before it even reaches your vacuum system.
- Equipped with a cartridge filter.

Legend: ■ Dry-Liquid Line
■ Dry Line



Custom-made **Industrial Automatik** with **separator**

REGEN Motor
17 HP (12.6 kW) to 30 HP (21.3 kW)

Three stacked motors are connected to a control panel which **supplies each floor according to the number of users**. Notice that **more than one user can be on the same floor**, unlike the previous setup.



Drainvac can assist you with system installations in environments where fires and explosions are at risk!

Preventive cleaning

All rooms where combustible dusts are generated shall be cleaned as often as necessary to prevent the accumulation of dusts in quantities that can present a fire or explosion hazard.

Cleaning

The upkeep of the work premises of an establishment shall be ensured through vacuuming, wet mopping or any other method that controls and reduces to a maximum the stirring up of dust.

Static electricity

Buildings and machinery should be cleaned with equipment: which does not generate static electricity or sparks; which conducts electricity and is grounded; which vacuums dust and conveys it to a safe place.



INDUSTRIAL SECTOR

P32-33 INTEGRATED CONFIGURATION (OFFICE & FACTORY)

CONFIGURATION: OFFICE & FACTORY



RECOMMENDED UNIT

INDUSTRIAL AUTOMATIK

- Custom-made.
- Designed to operate for several consecutive hours.
- Compact design compared to our competitors.
- No cartridge or filter to maintain.
- No post-cleaning required.
- Drains automatically into sanitary piping or can be redirected towards a floor drain.
- Easy access to the tank through the porthole.
- Automated cleaning cycle.
- Piping available in two sizes: 3" (76mm) or 4" (102mm).
- Easy maintenance through the porthole.
- Collect accidentally vacuumed objects thanks to the decanter.



COMPLEMENTARY ACCESSORIES

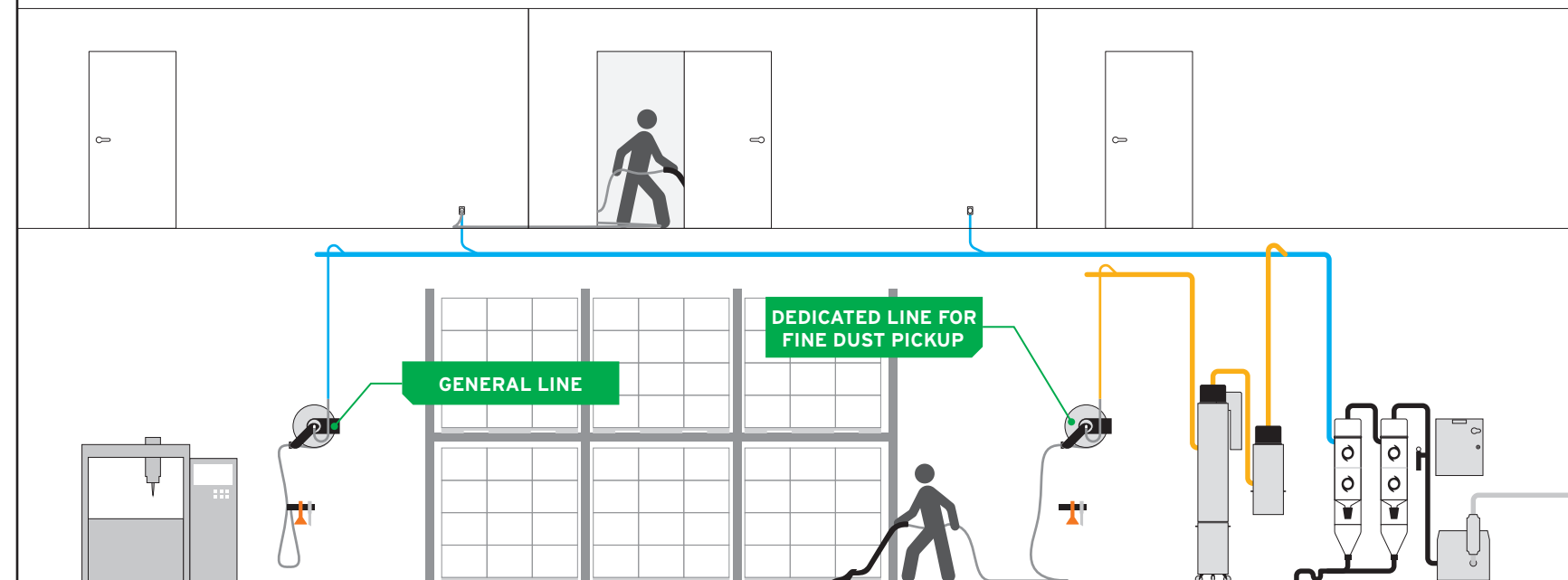
FINE DUST SEPARATOR

- Collects large volumes of fine dust.
- Features a self-cleaning cartridge filter.
- Follows NFPA standards.
- Includes a bin on wheels.

VACREEL®

- Retractable hose.
- Safe work environment.
- Hose available in 1.25" (32mm) or 1.5" (38mm).
- Tools with wall support included.

Legend: ■ Dry-Liquid Line
■ Fine Dust Line



Custom-made **Industrial Automatik**
with **fine dust separator** and **VacReel®**

REGEN Motor
17 HP (12.6 kW) to 30 HP (21.3 kW)

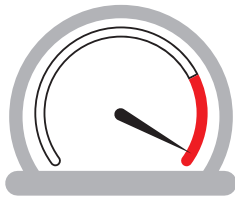
Dry-liquid piping lines are installed throughout the building and a dedicated line for fine dust reaches the specialized station.

VFD OPTION: Variable Frequency Drive

The control panel is programed **to adjust the motor's power according to the number of users.**



Based on the average annual energy consumption, **the financial return of the VFD panel is reached in about 3 years.**



If necessary, you can **increase the motor's power by up to 40%**, equivalent to an additional user.



80% of the time, the unit operates with 1 to 2 users. It is only 20% of the time that the unit is used at its fullest capacity. This said, with the VFD option, you can **save up to 30% on energy.** In addition, you **increase the motor's lifespan.**

ACCORDING TO SCHNEIDER

www.eco2-0.schneider-electric.com/chrome/root/

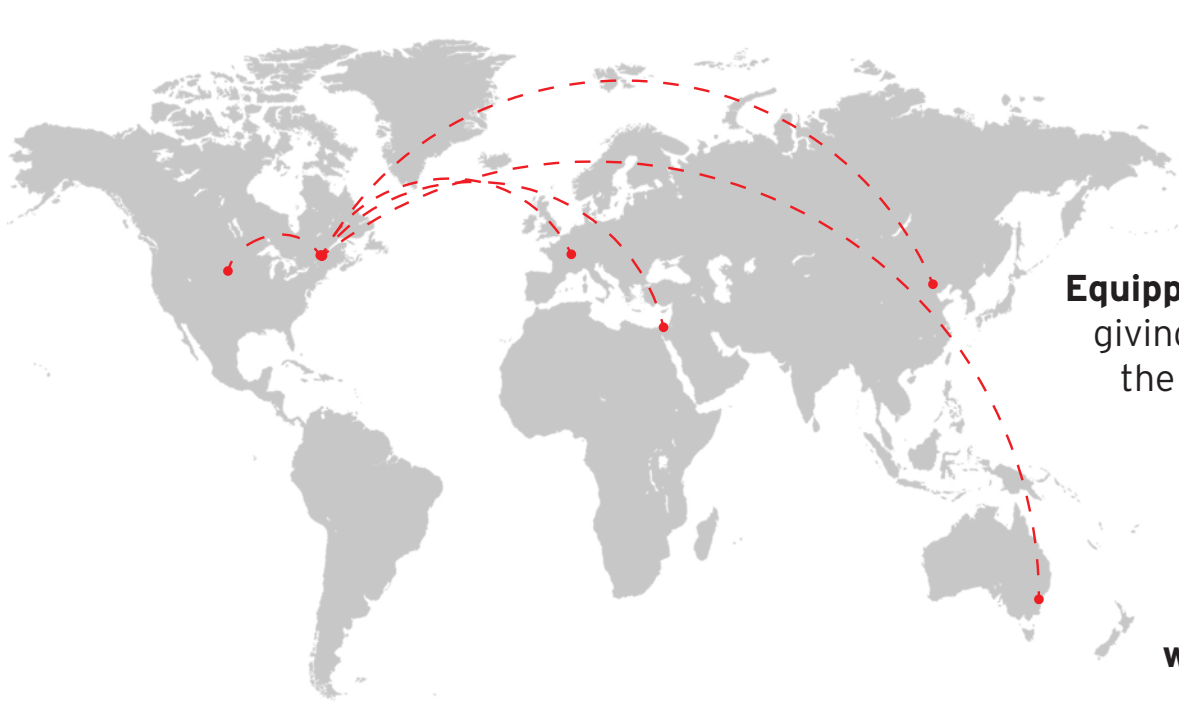
Main data entry of a 35 HP motor

Voltage (V)	380
Motor power (kW)	30
Motor efficiency (%)	92

Annual energy consumption (kWh)

Without variator (kWh)	40968
With variator (kWh)	28477
Annual energy savings (kWh)	12491

CO₂ Annual reduction: **2 tons / year**
Annual savings: **~US\$1000**



Equipped with a wireless system giving the possibility to control the power **from a distance.**



Can be installed on **wet and dry systems.**

POWER SUCTION PER USER

The number of users may vary depending on the material vacuumed and the distance the air must travel.



1 user :
6 HP



1 to 2 users :
11 HP



2 to 3 users :
17 HP



4 to 5 users :
30 HP

OPTION: Pipeline cleaning system fully

automated!

Keep your pipelines clean at all times with the automated pipeline cleaning system. **An essential complement** for commercial and industrial systems that **vacuum liquid substances**.

How does it work?

1. When the automated system starts its cleaning cycle, **it starts up the vacuum system** to circulate an airflow at all times.
2. Next, **water is propelled by intermittency** in the pipe lines.
3. Finally, **water stops running but the air continues to flow** in order to dry the pipelines. Then the vacuum system stops afterwards.

Install **up to 10 valves** on the same piping system for an optimal cleaning!



This option is only compatible with systems that vacuum **liquid**.



Control & Program

The automated cleaning option **includes a control panel** which lets you control and program **up to 3 cycles per day**.

By default, a control box is supplied with a industrial system and the control panel is incorporated. If you do not have an industrial system, a control box will be added.

Benefits

- **Keeps the pipes from clogging.**
- Keeps **constant suction power**.
- With preventive maintenance, you **avoid costly repairs** by keeping your pipelines functional at all times.
- The system **can be activated manually** if necessary.



ACCESSORIES

P40-41 1.5" / 38 mm

P42 1.25" / 32 mm

P43 2" / 50 mm, WATER HOSE

1.5" / 38 mm ACCESSORIES

Suggested Kit



- Commercial hose with cuff and metal adaptor
- All surface adjustable squeegee with rubber blades
- Aluminum dusting tool
- Aluminum upholstery tool
- Aluminum "S" wand
- Chromed crevice tool
- Metal hose hanger
- Accessory cloth hanger

Suggested Carwash Kit



- Commercial hose with cuff and metal adaptor
- Plastic crevice tool
- Plastic car wash tool
- Metal hose hanger

Suggested Cleaning Kit



- 50' (15 m) commercial hose with cuff and metal adaptor
- 3/8" (9 mm) x 50' (15 m) water hose with 1/4" (6 mm) connection: Faucet / Tool
- Squeegee and brush with 2 low pressure external jets [1/4" (6mm) quick connect]
- Metal hanger for commercial hose



Retractable hose

- Commercial hose resistant to corrosive substances
- 2 accessories and wall support included
- Also available in 1,25" (32 mm) dia.



Dusting tool with nylon bristles



Stainless steel upholstery tool with high pressure external jet



Aluminum S wand and all surface adjustable squeegee with rubber blades.



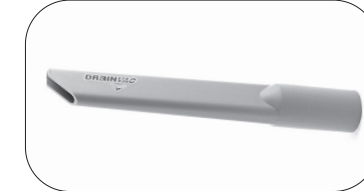
Squeegee and brush with 2 low pressure external jets



Chromed crevice tool



Aluminum crevice tool



Plastic crevice tool



Large crevice tool



Carwash tool

1.25" / 32 mm ACCESSORIES



Suggested Kit

- 1.25" (32 mm) x 25' (7.5 m) commercial hose with cuffs and metal adaptor
- Crevice tool
- Dusting tool
- Upholstery tool
- Big metal hanger for the hose and accessories
- Accessory cloth hanger
- 2 half wands (upper and lower part)



Aluminum wand with brush and squeegee



Wand with low pressure external jet



Carpet tool



Stainless steel upholstery tool with low pressure external jet



Water hose: Faucet/Tool

- 1/4" (6 mm) dia.
- 1/8" (3 mm) connection

DISCOVER OUR COMMERCIAL & INDUSTRIAL RANGE



CLEAR

2nd Floor The Network, Rd# 9 Jubilee Hills
Besides TV5 News Office Lane Hyderabad 500033. Telangana. India.
www.clear.in | sales@clear.in | +91 98480 34491